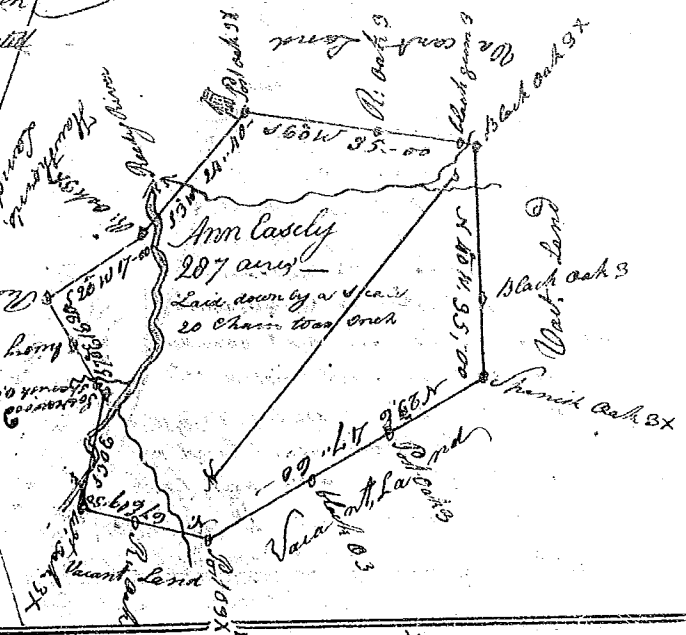


State of South Carolina

139

Pursuant to a warrant from John Thomas Esq. Commissioner of Locations dated 21<sup>st</sup> day of May 1784. I have Admeasured and laid out unto Ann Casely a tract of two hundred & eighty seven acres of land Situate in Ninety Six District West of the old Indian Boundary on Reedy River. Bounding N.W. on Cas Hawthorn's Land, on all other sides on Vacant Land and hath such shape and Marks as the annexed plat Represents.

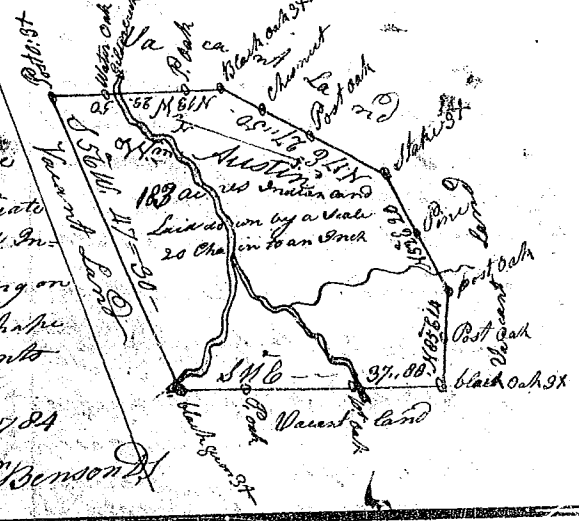
Survey this 29<sup>th</sup> of June 1784  
 Recorded the 17<sup>th</sup> Sept 1784  
 Wm Benson



State of South Carolina

Pursuant to a warrant from John Thomas Esq. Commissioner of Locations dated 29<sup>th</sup> day of July 1784. I have Admeasured and laid out unto William Austin a tract of one hundred and eighty three acres Situate in Ninety Six district on the west of the old Indian Boundary on Gilders creek Bounding on all sides Vacant Land and hath such shape and Marks as the annexed plat Represents.

Survey this 30<sup>th</sup> day of August 1784  
 Recorded the 17<sup>th</sup> Sept 1784  
 Wm Benson



State of South Carolina

Pursuant to a warrant from John Thomas Esq. Commissioner of Locations dated 29<sup>th</sup> day of May 1784 I have Admeasured and laid out unto William Fields a tract of one hundred and seventy four acres of land Situate in Ninety Six District on north fork of Ayer River East of the old Indian Boundary. Bounding on all sides on Vacant Land & hath such shape and marks as the annexed plat Represents.

Survey this 28<sup>th</sup> day of August 1784  
 Recorded the 17<sup>th</sup> Sept 1784  
 del. to Wm Fields  
 Wm Benson

